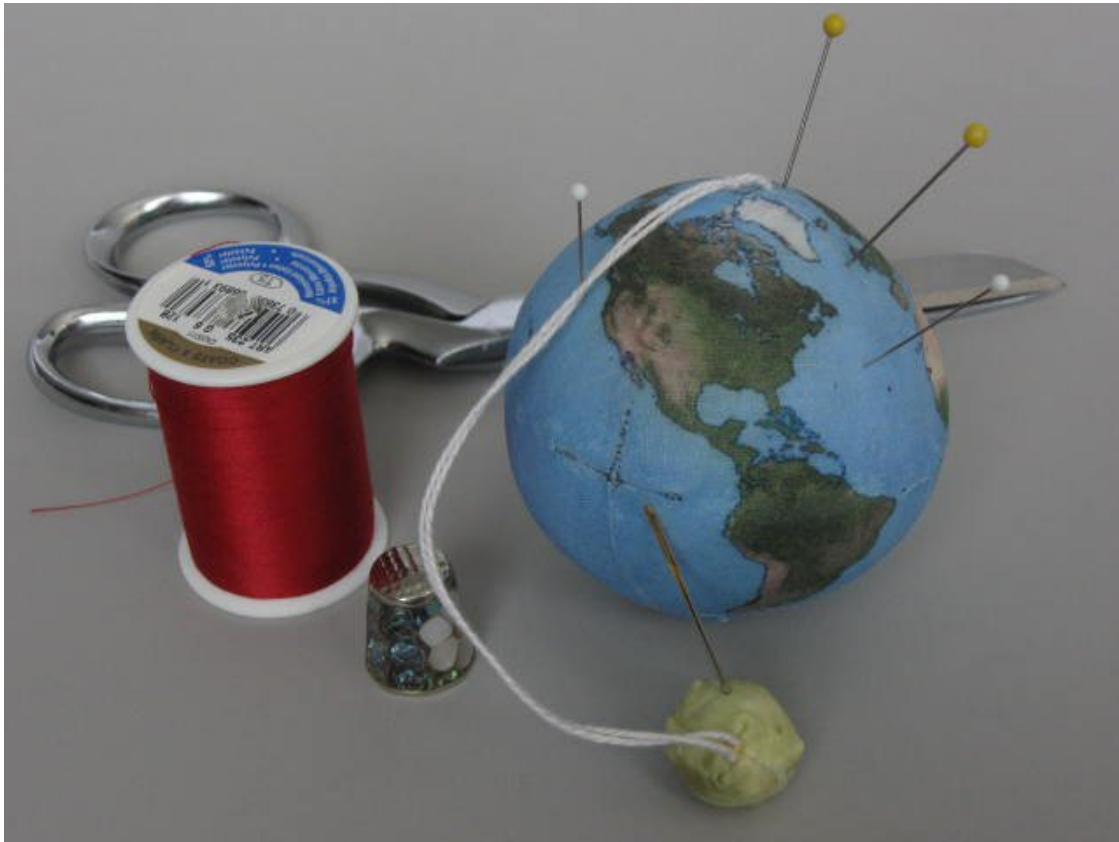


Earth and Moon Pincushion

from sherralynsdolls.com



Materials needed

- Ink jet printable fabric or preprinted fabric from the Spoonflower website
- Matching thread
- Cotton pearl embroidery thread
- Polyester fiber fill
- Tacky glue

Tools needed

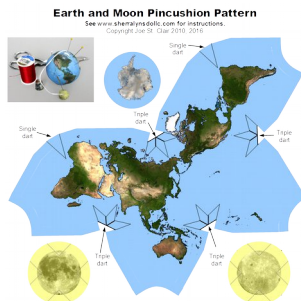
- Controllable speed sewing machine
- Ink jet printer (optional)
- Doll or large tapestry needle

Skills needed

- Sew darts
- Follow seam line
- Turn object
- Stuffing

This novelty pincushion is a 2¾ inch globe stuffed with polyester fiber fill and an attached Moon to scale. The Moon can also be stuffed with polyester fiber fill or with abrasive material to act as an emery.

To make the pincushion you will need either to print the pattern at the end on these instructions onto fabric using an ink jet printer or you can purchase a preprinted version of the pattern from the Spoonflower website. The pattern is available at <http://www.spoonflower.com/designs/5187543>.



If you elect to get the fabric from Spoonflower you can skip the sections on [Preparing the fabric](#) and [Printing the pattern](#) and continue with the section on [Cutting out the pattern](#).

Preparing the fabric

The pattern attached at the end of these instructions is printed onto an 8½ x 11 inch piece of white cotton using an ink jet printer. I have had good results using *Precious Treasures Sew-On Printable Fabric* from Dritz. June Tailor also makes *Sew-in Colorfast Fabric Sheets For Ink Jet Printers*. The fabric in the June Tailor product is a bit heavier and somewhat harder to work with than the Dritz version. You can also make your own printable fabric by ironing a sheet of white 100% cotton fabric onto a sheet of freezer paper. If you take this DIY approach then you may want to make your pincushion colorfast by either treating the fabric with *Bubble Jet Set 2000* from Jenkins before ironing it to the freezer paper or by applying *Mod Podge* to the finished project. In my experience the commercially prepared fabrics held their color better than that prepared with *Bubble Jet Set*.

Printing the pattern

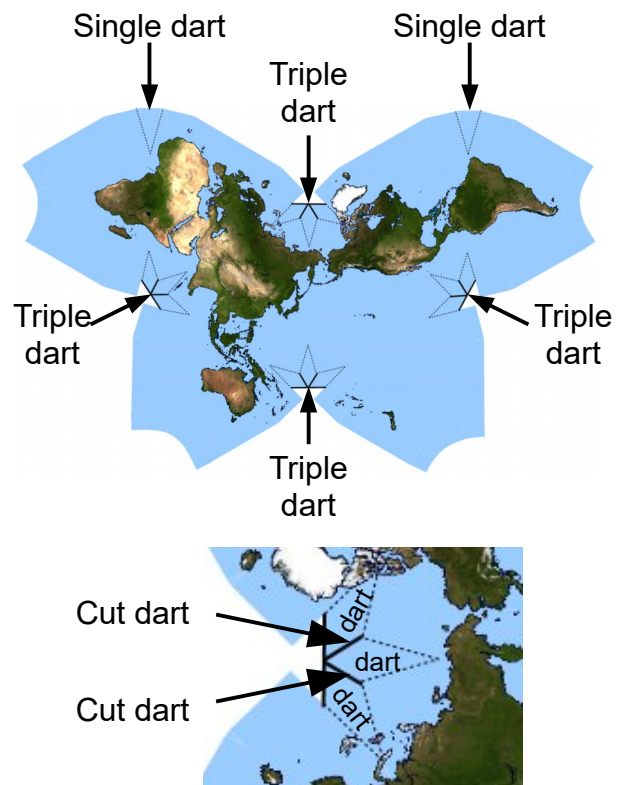
You want the pattern printed full size, not reduced in size, and because it is easy to get your printer into a “shrink to fit” mode I recommend that you print a trial copy of the pattern onto a piece of regular paper and verify that the inch ruler on the pattern comes out the correct size before printing onto the fabric.

Cutting out the pattern

Once the pattern has been printed onto the fabric, cut out the yellow Moon maps and lay them aside for later.

Cut out the Antarctic circle and lay it aside. Antarctica will be glued to the Earth after it is stuffed.

Cut out the map of the Earth by trimming around the blue butterfly shape. Notice the four clusters of triple darts in the Arctic Ocean, the Indian Ocean, and the eastern and western Pacific Ocean. You must cut along the solid black lines in these clusters of darts to separate them into three darts.



Sewing the Earth



A sewing machine that allows precise control of the stitching speed is needed. Begin by sewing the two single darts in the Atlantic Ocean off the coasts of Africa and South America. Then sew the four clusters of triple darts in the Arctic, Indian, eastern and western Pacific Oceans. The triple darts should meet at 90° angles.

The pattern allows for a ¼ inch seam. Sew the main seam running from the triple dart cluster in the Arctic Ocean, through the Atlantic and down to the Antarctic Ocean. The triple darts in the Arctic Ocean and this main seam should meet at 90° angles forming a plus (+) sign. The darts off the African and South American coasts should meet at this seam. The two darts and this seam should also meet at 90° angles and form a plus sign. It's easier to match these two darts if you first cut them and finger press them open. These photos show how the darts and seams look from the right side of the fabric.



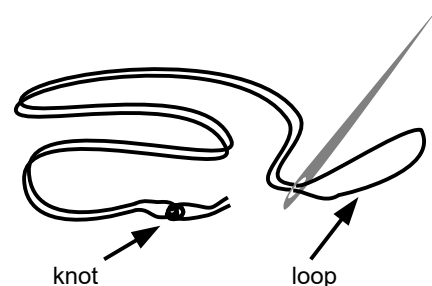
Next sew the three seams running from triple dart clusters in the Indian and Pacific Oceans down to the Antarctic Ocean. Each of

these three seams should also form a plus with the darts and seam meeting at 90°. Turn the globe right side out. Here are photos of the completed globe before and after it is turned.



Attaching the string

There are two ways to attach the string to the globe. If you have a long doll needle it is probably best to wait and attach it after the globe has been stuffed and before Antarctica has been glued on. If you do not have a doll needle that is long enough to go through the stuffed Earth then you can attach the string at this point after the Earth has been turned right side out and before it is stuffed. You will need a needle with an eye large enough to hold a loop of the cotton pearl embroidery thread. Tie a loop in the embroidery thread and then thread the needle.

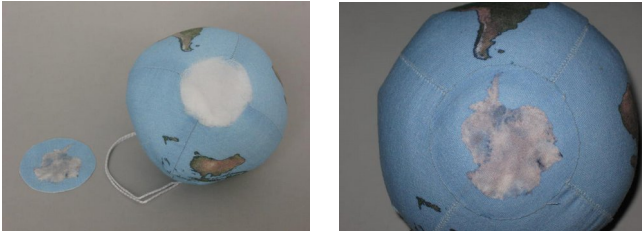


From inside the globe push the needle through the north pole and pull the end of the loop all the way through. The knot stays inside the globe.



Stuffing the Earth

Stuff polyester fiber fill into the Earth until it holds its shape and has the desired firmness. If you opted to add the string after stuffing then now is the time to insert it using your doll needle. We are now ready to glue Antarctica into place.



Adding Antarctica

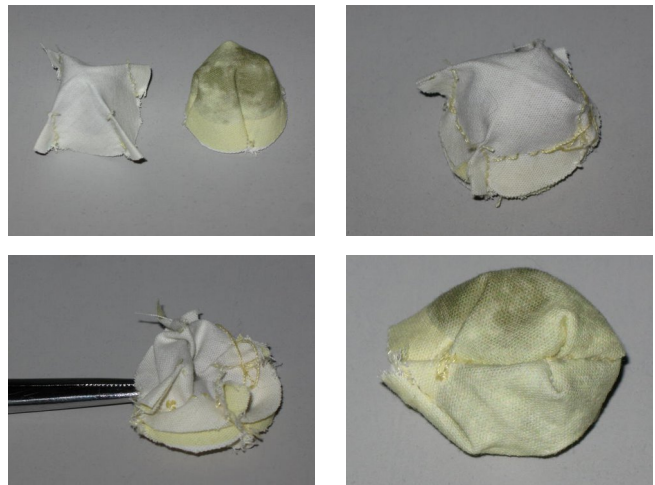
I found it easiest to glue Antarctica into place using tacky glue. Put a ring of glue around the Antarctic patch and press it into place. The Antarctic peninsula points just a little to the east of the tip of South America.

If you prefer you can use fusible webbing to attach the patch. When ironing this on be careful not to get any of the stuffing between the patch and the webbing as it will not hold well.

Sewing the Moon

The Moon is much smaller and easier to sew than the Earth. Because it is so small the job is rather fiddly.

I used machine stitching to put the four darts into each half of the Moon. Then I matched the darts in the two halves together and used hand stitching to connect the two sides. I left about ½ inch unfinished so I could turn and stuff the Moon. I stuffed the Moon with the same polyester fiber fill I used for the Earth, but you could stuff it with a grit if you wish to make the Moon act as an emery. When the stuffing is completed, hand stitch the seam closed.



Finishing up

Stitch the Moon onto the embroidery floss that is attached to the Earth.

If you did not use a colorfast fabric in making the globes, you can paint the outside with a coat of *Mod Podge* to waterproof it.

Copyright Joe St. Clair 2010, 2016

You may make as many pincushions from this pattern as you wish for gifts and sale. You may not sell the pattern itself.

Earth and Moon Pincushion Pattern

© 2010, 2016 Joe St. Clair

